



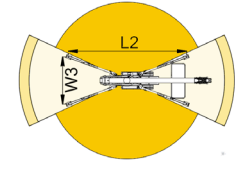
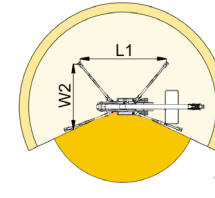
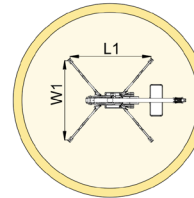
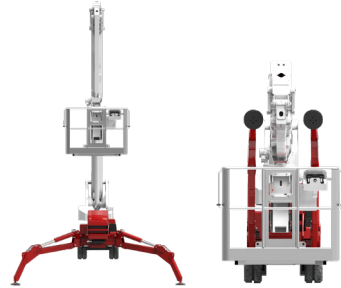
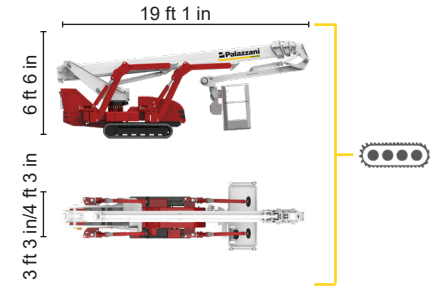
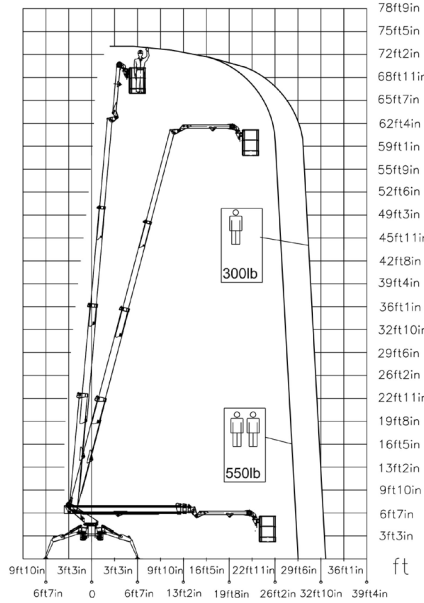
BI-ENERGY



Diesel
10,6 kW



Single-phase
Electric motor
110VAC - 2,2 kW



29 ft 6 in	33 ft 6 in	19 ft 8 in	L1	L2	W1	W2	W3
550 lb	264 lb	550/264 lb	16 ft 1 in	20 ft 6 in	14 ft 3 in	10 ft 12 in	9 ft



TSJ 75/C 73 ft 2 in 33 ft 6 in 550 lb 660° 4 ft 11 in x 2 ft 4 in 90°+80° 9 ft x 14 ft 3 in 36% 29% 1,49 mph 7430 lb 4271 lb 33 psf 80,6 psf

Available power options:

BI-ENERGY (DIESEL+AC)

ECO (AC+BATTERY)

Characteristics and technical data are informative only and subjected to change without notice.

Palazzani Industrie S.p.A.

Via del Pavione, 4 - 25050 - Paderno F.C. (BS) - Italy

Tel. (+39) 0306857073

info@palazzani.it

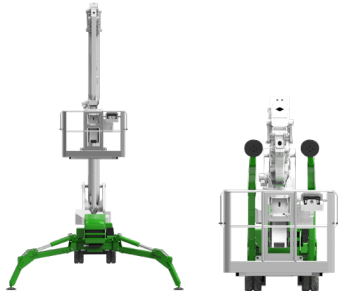
www.palazzani.it



QUALITY SYSTEM
CERTIFIED BY BUREAU VERITAS
= ISO 9001 =



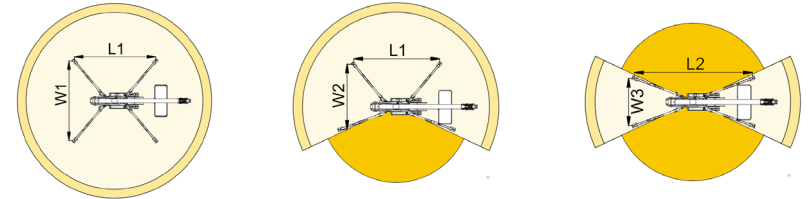
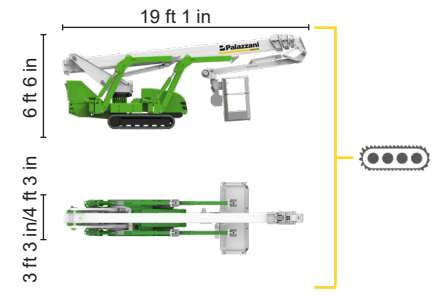
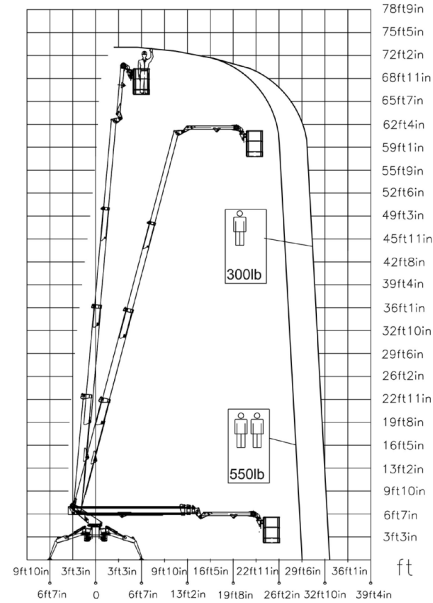
NC 803 A 22



ECO

Single-phase Electric motor

Lithium iron phosphate battery
LiFePO4
48V 360Ah



29 ft 6 in	33 ft 6 in	19 ft 8 in	L1	L2	W1	W2	W3
550 lb	264 lb	550/264 lb	16 ft 1 in	20 ft 6 in	14 ft 3 in	10 ft 12 in	9 ft



TSJ 75/C 73 ft 2 in 33 ft 6 in 550 lb 660° 4 ft 11 in x 2 ft 4 in 90°+80° 9 ft x 14 ft 3 in 36% 29% 0,93 mph 7430 lb 4271 lb 33 psf 80,6 psf

Available power options:

- BI-ENERGY** (DIESEL+AC)
- ECO** (AC+BATTERY)

Characteristics and technical data are informative only and subjected to change without notice.

Palazzani Industrie S.p.A.
Via del Pavione, 4 - 25050 - Paderno F.C. (BS) - Italy
Tel. (+39) 0306857073
info@palazzani.it
www.palazzani.it



QUALITY SYSTEM
CERTIFIED BY BUREAU VERITAS
= ISO 9001 =

NC 805 A 22