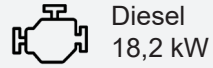




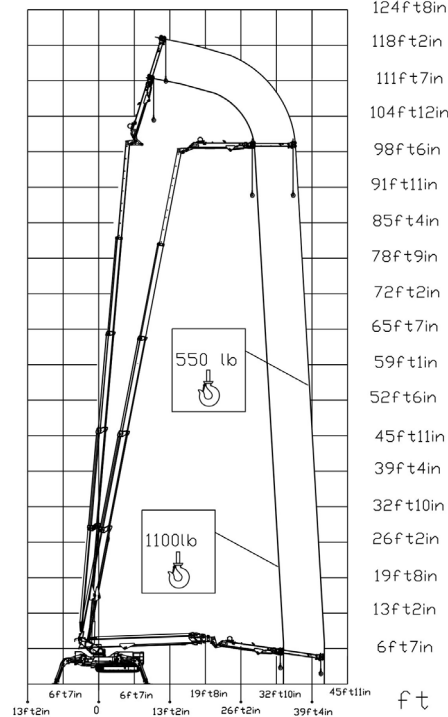
BI-ENERGY



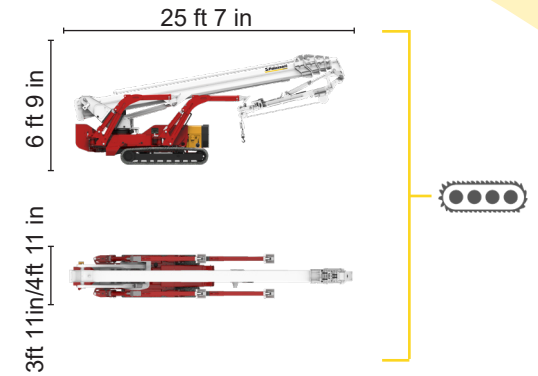
Diesel
18,2 kW



Single-phase
Electric motor
110VAC - 3 kW



1100 lb	550 lb
34 ft 1 in	41 ft 8 in



XTJ 121+/C 118 ft 1 in 34 ft 1 in 1100 lb 660° 5 ft 11 in x 2 ft 4 in 90°+80° 8 ft 9 in/17ft 3 in 23% 36% 1,55 mph 16788 lb 12364 lb 54,7 psf 113,2 psf

Available power options:

BI-ENERGY (DIESEL+AC)

ECO (AC+BATTERY)

Characteristics and technical data are informative only and subjected to change without notice.

Palazzani Industrie S.p.A.

Via del Pavione, 4 - 25050 - Paderno F.C. (BS) - Italy

Tel. (+39) 0306857073

info@palazzani.it

www.palazzani.it



QUALITY SYSTEM
CERTIFIED BY BUREAU VERITAS
= ISO 9001=



NC 839 A 22



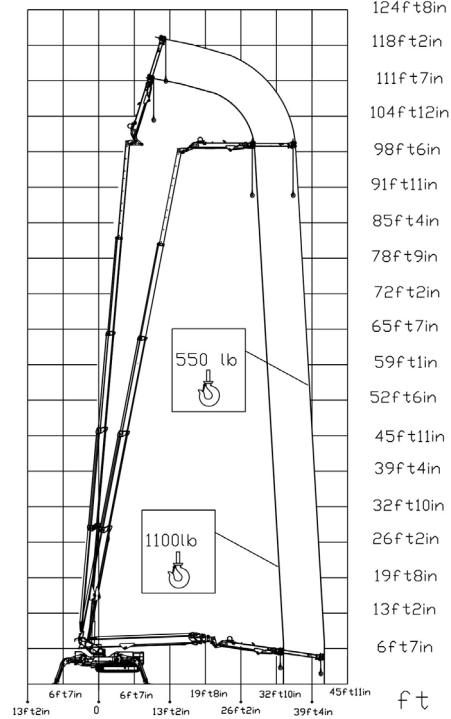
ECO



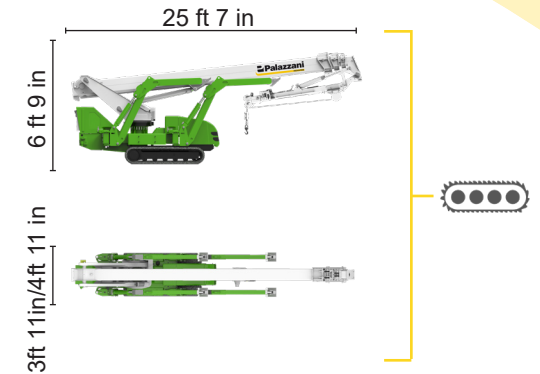
Single-phase
Electric motor
110VAC - 16 kW



Lithium iron
phosphate battery
LiFePO4
48V - 420 Ah



1100 lb	550 lb
34 ft 1 in	41 ft 8 in



XTJ 121+/C 118 ft 1 in 34 ft 1 in 1100 lb 660° 5 ft 11 in x 2 ft 4 in 90°+80° 8 ft 9 in/17ft 3 in 23% 36% 1,55 mph 16788 lb 12364 lb 54,7 psf 113,2 psf

Available power options:

BI-ENERGY (DIESEL+AC)

ECO (AC+BATTERY)

Characteristics and technical data are informative only and subjected to change without notice.

Palazzani Industrie S.p.A.

Via del Pavione, 4 - 25050 - Paderno F.C. (BS) - Italy

Tel. (+39) 0306857073

info@palazzani.it

www.palazzani.it



QUALITY SYSTEM
CERTIFIED BY BUREAU VERITAS
= ISO 9001=



NC 841 A 22